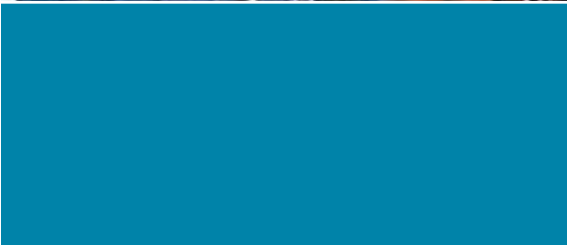


SOUTHERN GOVERNORS' ASSOCIATION

# Annual Report 2005



Soul<sup>of the</sup>  
South



OUR HERITAGE  
OUR HOSPITALITY  
OUR HOMETOWNS



# MEMBERS

---

## MEMBERS

**GOVERNOR SONNY PERDUE •**  
SGA Chairman and Host  
Georgia

**GOVERNOR KATHLEEN BABINEAUX BLANCO •**  
First Vice Chairman  
Louisiana

**GOVERNOR HALEY BARBOUR •**  
Second Vice Chairman  
Mississippi

**GOVERNOR BOB RILEY •**  
Alabama

**GOVERNOR MIKE HUCKABEE •**  
Arkansas

**GOVERNOR JEB BUSH**  
Florida

**GOVERNOR ERNIE FLETCHER •**  
Kentucky

**GOVERNOR ROBERT L. EHRLICH, JR.**  
Maryland

**GOVERNOR MATT BLUNT**  
Missouri

**GOVERNOR MICHAEL F. EASLEY**  
North Carolina

**GOVERNOR BRAD HENRY**  
Oklahoma

**GOVERNOR ANÍBAL ACEVEDO-VILÁ**  
Puerto Rico

**GOVERNOR MARK SANFORD**  
South Carolina

**GOVERNOR PHIL BREDESEN**  
Tennessee

**GOVERNOR RICK PERRY**  
Texas

**GOVERNOR CHARLES W. TURNBULL**  
U.S. Virgin Islands

**GOVERNOR MARK R. WARNER •**  
Virginia

**GOVERNOR JOE MANCHIN III**  
West Virginia

• Executive Committee Member



# REPORT FROM THE CHAIRMAN

---

The Southern Governors' Association has long been known as a leader among organizations promoting and advancing the South. When I was first elected Governor of Georgia, this reputation, and the recommendations from friends and associates, convinced me that Georgia's participation in SGA was important. The South is one of the fastest growing regions in the country. Each of our states plays a part in advancing the South's national and global influence. SGA is crucial to the future of the region, and this organization continues to respond to a changing environment. It has been an honor to serve as Chairman of SGA in what has been a pivotal year of change and rejuvenation for the organization.

Many of the changes at SGA go to the very core of how we do business. As we all know, success depends on employing the skills and talents of good people. That is where we started. The departure of SGA's executive director after ten years of service to the organization opened the door to a critical examination of our staffing requirements. We began with an extensive search for new staff leadership, and in April, Diane Duff began her tenure as SGA's executive director.

Diane joins SGA with a strong background in business advocacy, association management, and public policy.

We also reviewed SGA's priorities and work program, and realigned our organization to reflect an appropriate balance between governors' interests in federal legislative activity and regional projects. Vacancies gave us the flexibility to adjust our staffing framework; three legislative director positions were eliminated, and two new

positions were created: a federal policy director, filled by existing staff, and a special projects director. We created two new supporting positions and revised the functions of the administrative assistant. Efforts to fill these positions and complete the SGA staff team are ongoing, and we expect to be fully staffed in the fall.

Simultaneously, we began reviewing our policy resolution process and our relationships with our corporate sponsors. At our summer business meeting in Des Moines, governors reviewed and approved proposals that would make changes to both. SGA's Executive Committee agreed that SGA's policy resolutions should coincide with Congressional activity, enabling SGA to establish federal policy priorities based on anticipated legislative opportunities and to provide increasing focus and leadership on these and other priority issues before federal decision-makers. We also felt it was important to expand the opportunities available to the corporate community to partner with SGA. Our corporate partners are an important component of our region's success and we look forward to improved synergies with the business community.

Finally, we altered the dues structure to create a more equitable balance of investment from SGA member states. This

THESE CHANGES WILL BE  
IMPLEMENTED OVER THE  
NEXT THREE YEARS,  
CREATING A MORE STABLE  
FINANCIAL FOUNDATION FOR  
THE ORGANIZATION AS IT  
CONTINUES TO PROVIDE  
LEADERSHIP ON ISSUES OF  
IMPORTANCE IN THE SOUTH.

change will be implemented over the next three years, creating a more stable financial foundation for the organization.

This year has been a time of renewal and collaboration. Through my Chairman's Initiative, SGA spent the last year focusing



*Pictured at SGA's 2004 Annual Meeting, in Richmond, Virginia, are Govs. Ernie Fletcher (Ky.), Bob Wise (W.V.), Mike Huckabee (Ark.), Kathleen Babineaux Blanco (La.), Mark R. Warner (Va.), Sonny Perdue (Ga.), Bob Holden (Mo.), Mark Sanford (S.C.), and Phil Bredesen (Tenn.). Photo courtesy Michaela White, Office of Gov. Mark R. Warner.*

on ways to support the continued growth of the South's vibrant tourism industry. Promoting tourism is time and resources well spent. Let's take a look at the statistics: SGA member states enjoy more than \$175 billion in direct economic impact from tourism. Travel to our states not only generates \$30 billion in tax revenues but also creates approximately 2.6 million jobs. This represents 40% of total US state-based travel-generated employment. Tourism is big business for the South, and SGA's efforts will expand this important industry.

As governors make difficult policy decisions that will shape the direction of their states' economies, tourism's economic impact must be measured accurately. To help governors compare the impact of tourism to the contributions of other industry segments, we have explored Tourism Satellite Accounts, an econometric tool endorsed by the U.S. Department of Commerce, World Trade Organization and other national and international stakeholders as a common means of measuring the impact of the tourism industry on economic activity. This tool is now being explored for adoption by many states, and the potential value of this tool will be one of the subjects for

discussion with governors at SGA's 2005 Annual Meeting.

To support tourism throughout the region, we have pursued the development of an experience-based travel planning Web site, initially focused on the South's rich musical heritage. By offering mapping and dynamic travel planning software for the entire region we would be able to provide an innovative tool that will help position the South as a region and leverage the existing tourism promotion investments of each individual state. The participation of the SGA member states' tourism offices, arts federations and other stakeholders has been—and will continue to be—critical to the development and implementation of this concept. A preview of the creative aspects and the features of the Web site also will be highlighted at this year's annual meeting. In addition to designing a site to accommodate the addition of other "Southern" cultural heritage experiences, we anticipate that after its initial launch the final product will be a self-funded, revenue generating vehicle for SGA.

In addition, we have been working with your tourism directors to develop a book on the best practices for promoting tourism in the South. Dr. Rich Harrill, Director of the University of South Carolina's Institute for Tourism Research, has been commissioned to complete this useful reference tool, and we expect it to be available to SGA member states at the end of the year.

And finally, we have developed a strong partnership with *Southern Living* magazine. With a circulation reaching approximately 16 million households, *Southern Living* can help us to cross market the launch of the SGA web site and promote state-specific tourism programs. Planned for the April 2006 issue, which coincides with *Southern Living's* 40th Anniversary, my "Soul of the South" initiative will be featured in an editorial section highlighting music heritage in the region.

Of course, in addition to promoting tourism, SGA remains committed to other issues crucial to our region. Southern governors have maintained their dedication to strengthening

higher education research capacity by supporting the Southern e-Corridors project. Initiated in the fall of 2002 by Governor Mark R. Warner of Virginia, this project created a partnership between the Southern Governors' Association and the Southeastern Universities Research Association (SURA) to support the establishment of high capacity fiber optic computer networks throughout the South to increase the region's research capacity and economic development prospects.

Putting his leadership in this area to work at home, Governor Warner announced the creation of VORTEX, Virginia's broadband optical fiber network. Currently under construction, VORTEX is scheduled to be completed this summer, and was made possible through a public-private partnership that supports both research and economic development interests. Many other Southern governors are actively pursuing funding for projects that also would connect their state's universities to new national and international research networks. SGA has continued to work closely with SURA over the past year to provide member states with critical information to support these activities.

This year also has marked the completion of SGA's telehealth initiative. With the leadership of Kentucky's Governor Ernie Fletcher, governors will leave this year's annual meeting with the benefit of a case study and a road map demonstrating how to create a telehealth communications network that will help state officials prepare for and respond to bio-terrorism and other public health emergencies, even with limited financial resources. The development of in-state telehealth networks is the first step toward the creation of a seamless interstate network.

While working through the complex details of all these projects in the midst of staffing changes, SGA was still able to devote attention to the South's most pressing legislative priorities.

The State Children's Health Insurance Program (S-CHIP) has enjoyed enormous success in the South. Over the past eight years, Southern states have enrolled over 1.8 million children in this program, a full 45%

of the total U.S. enrollment. In order to ensure adequate and stable funding for the program, SGA developed a new policy this year that will help governors extend efficiencies while giving the South the programmatic equity it deserves. We have begun a dialog with the U.S. Department of Health and Human Services about our concerns and will continue to focus on achieving our objectives as Congress moves to reauthorize the program.

The Temporary Assistance for Needy Families Program (TANF) has continued to operate under short-term extensions this year, while Congress continues to work on completing a long-term reauthorization. Throughout these discussions, SGA has continued to voice the regional concern of governors to protect the hard work and investments that have been made while providing adequate resources to ensure continued success.

Additionally, continued concerns about the absence of tools or a consensus to help the South respond to drought led SGA to collaborate with our Western counterparts to sponsor Congressional staff briefings in the House and Senate. Through these briefings, Congressional staff learned about governors' support for pending legislation that would establish a national drought policy. The legislation SGA supports would improve national drought preparedness, mitigation, and response efforts, opposed to the current reactive response once the disaster has occurred.

In closing, I would like to thank all of SGA's Governors for their vision and leadership. It is an honor to work with each and every one of you in support of the South. I thank you for your support of my efforts as Chairman of this organization. I turn the reins over to Governor Blanco, confident that SGA has a strong foundation in place to continue its leadership role as an advocate for the South.

Sincerely,  
Sonny Perdue

# A BRIEF HISTORY

---

Seventy-one years ago, on November 21, 1934, the five-member nucleus of the Southeastern Governors' Conference met with President Franklin D. Roosevelt to

TODAY, THE SOUTHERN GOVERNORS TAKE ADVANTAGE OF THE ASSOCIATION'S LOCATION IN WASHINGTON TO WORK ON A FULL ARRAY OF PUBLIC POLICY ISSUES AFFECTING THE REGION. THEY ALSO CONTINUE TO WORK COOPERATIVELY TO PLACE THE SOUTH IN THE BEST POSSIBLE POSITION IN THE NEW MILLENNIUM.

discuss the inequitable railroad rate system that put Southern industry at a disadvantage vis-a-vis the rest of the country. This issue was the subject of the conference's first resolution and, after 11 years of work, the governors succeeded in having the Interstate Commerce Commission abolish the rate-differential system. In the late 1940s, the conference stopped using its own secretary and began instead to utilize the secretariat services of

the Council of State Governments, with which SGA remains affiliated today.

Over the years, the governors have been deeply involved in the major challenges to the region, from diversification of the South's heavily agricultural economy and expansion of opportunities for higher education in the 1940s, to nuclear energy in the 1950s, economic development in the 1970s, infant mortality in the 1980s and striking a better state/federal balance in the 1990s. Along the way, the governors also created several other

regional organizations such as the Southern Regional Education Board, the Southern States Energy Board, the Southern Growth Policies Board and the Southern Regional Project on Infant Mortality.

Also, as the years have gone by, the number of member governors grew from five in 1934 to 19 in 1969. In 1945, there were 13 members: the governors of Alabama, Arkansas, Florida, Georgia, Kentucky, Louisiana, Mississippi, North Carolina, Oklahoma, South Carolina, Tennessee, Texas and Virginia. Maryland and West Virginia joined in 1946. Delaware joined in 1951, but left the organization in 2000. Missouri joined in the early 1960s and Puerto Rico and the Virgin Islands in the late 1960s. In 1978, the governors adopted the organization's present name—the Southern Governors' Association (SGA).

In the early 1980s, SGA moved its office from Atlanta, Georgia, to Washington, D.C., to raise the region's profile in the nation's capitol. Today, the Southern governors take advantage of the association's location in Washington to work on a full array of public policy issues affecting the region. They also continue to work cooperatively to place the South in the best possible position in the new millennium.

## MISSION STATEMENT

In recent years, the South has become the dominant region in the country—a region characterized by innovation, growth and opportunity. At the forefront of key changes in the region are the Southern governors.

Through the Southern Governors' Association (SGA), these leaders have a unique opportunity to explore issues, exchange ideas, address pressing problems and promote regional accomplishments.

The oldest and historically the largest of the regional governors' associations, the Southern Governors' Association continues to represent the common interests of Southern states' chief executives and provide a vehicle for promoting them. The ongoing mission of SGA is to support the work of the governors by providing a bipartisan, regional forum to help shape and implement national policy and to solve state and regional problems.

SGA pursues this mission by coordinating regionally collaborative initiatives; tracking and analyzing federal legislation and regulations of interest to the Southern states; advocating before Congress and the executive branch the Southern governors' policy agenda as expressed through approved policies; and by convening meetings for governors and their staffs.

## **OBJECTIVES**

### **IDENTIFY VITAL ISSUE INTERESTS OF SOUTHERN STATES**

Through SGA, governors identify and explore issues of regional significance. SGA closely follows these issues, analyzes their regional impact and communicates information back to the governors' offices through reports and meetings. On select issues, governors and their staffs formulate regional positions and policy recommendations.

### **ADVOCATE REGIONAL INTERESTS IN WASHINGTON**

Through SGA, governors advance their mutual interests in Washington and speak with a unified voice on issues important to the region. Through policy statements, joint letters, Congressional testimony, meetings

and other vehicles, SGA communicates the region's concerns to Congress and the Administration.

### **ENHANCE REGIONAL COOPERATION**

SGA serves as a forum to expedite cooperation among the Southern states in



solving regional problems. State initiatives reduce dependence on the federal government, maximize state resources, benefit the individual states, enhance interstate relations and place the South in the forefront of regional cooperation.

### **PROMOTE INNOVATIVE SOUTHERN PROGRAMS AND PRACTICES**

SGA provides comparative information on best practices to its members on pressing issues. Through reports, meetings and other mechanisms, SGA facilitates the exchange of information on individual state responses to pressing regional concerns.

# ALABAMA



**GOVERNOR BOB RILEY**  
**FIRST LADY PATSY RILEY**

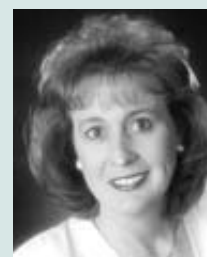
**BIRTHDATE:** October 3, 1944  
**BIRTHPLACE:** Ashland, Alabama  
**EDUCATION:** University of Alabama  
B.A. 1965  
**PARTY:** Republican  
**FAMILY:** Four children, four  
grandchildren  
**RELIGION:** Baptist  
**Elected:** November 2002  
**TERM EXPIRES:** January 2007



- ◆ Before entering public service, ran a number of successful businesses, including a trucking company, a car dealership, a real estate company, a grocery store and a small pharmacy. He's also been a cattleman for almost 30 years.
- ◆ Prior to his election, served for three terms in Congress from 1996–2002 representing Alabama's third district.
- ◆ Became the state's 52nd Governor in January 2003 with a promise to bring change to state government.
- ◆ Signed an Executive Order to stop "pass-through pork," a deceitful spending practice that for years had allowed legislators in Montgomery to hide taxpayer money in the budget for handpicked special projects, eliminating more than \$40 million in pass-through pork projects.
- ◆ Fulfilled a promise to publicly disclose how tax dollars were spent by the Governor's Office and the flight logs of state aircraft.
- ◆ Established the toughest ethics rules for the executive branch in the history of the state and he has challenged the Legislature to adopt its own Code of Ethics.
- ◆ Proposed a reform of Alabama's regressive and unstable tax system and stronger controls on state spending. Although the reform plan was defeated, Governor Riley has managed the state out of its greatest financial crisis since the Great Depression with an eye on improved efficiency and cost-savings.
- ◆ During his first two years in office, approved budgets that cut funding for agencies and programs by more than \$500 million. Most state agencies had their budgets reduced by 25 percent, and funding for non-state agencies was eliminated.
- ◆ Named the "Public Official of the Year" by *Governing* magazine in 2003, and hailed as one of the nation's "most courageous politicians" by *Time* magazine.
- ◆ Has transformed an economy that was weak and bleeding jobs when he was elected, to one that is recognized as one of the strongest state economies in the nation. During his term as Governor, Alabama experienced its first net increase in jobs in three years and the state has been named "State of the Year" every year he has been in office because it has led the South in economic development.
- ◆ Under his leadership, the Alabama Reading Initiative has received record funding and is being implemented in every K-3 classroom in the state.
- ◆ Proposed record funding for the Alabama Math, Science and Technology Initiative and a new distance learning program to open up new opportunities to students across the state that was unavailable to them in their classrooms.

# ARKANSAS

- ◆ An ordained Baptist minister, served as president of the 490,000 member Arkansas Baptist State convention in 1989, making him the youngest president in the organization's 150-year history.
- ◆ Elected Lieutenant Governor in a 1993 special election and re-elected in 1994.
- ◆ Became governor on July 15, 1996, upon the resignation of Governor Jim Tucker. Re-elected in 1998.
- ◆ As governor, signed the first major broad-based tax cut in Arkansas history and simplified the procedure for renewing car tags.
- ◆ Signed legislation creating ARKids First, to provide health insurance to working families ineligible for Medicaid.
- ◆ Successfully led the fight for the largest road construction project in Arkansas history.
- ◆ Initiated a campaign designed to educate the elderly on successful long-term care options and provide greater access to necessary resources.
- ◆ Author of four books, *Character is the Issue*, *Kids Who Kill*, *Living Beyond Your Lifetime*, and *Quit Digging your Grave With a Knife and Fork*.
- ◆ SGA Chairman in 1999-2000, leading a special initiative, "From Fiber Optics to Fly Fishing," that focused on connections between technology, the new economy and quality of life.
- ◆ Former Chairman of the Southern Growth Policies Board, the Southern Regional Education Board, the Southern Technology Council, the Southern International Trade Council, and the Interstate Oil and Gas Compact Commission, State Co-Chairman of the Delta Regional Authority, and 2002-03 President of the Council of State Governments.
- ◆ Chairman of the Education Commission of the States.
- ◆ Chairman of the National Governors Association in 2005-06.



**GOVERNOR MIKE HUCKABEE**  
**FIRST LADY JANET HUCKABEE**

**BIRTHDATE:** August 24, 1955  
**BIRTHPLACE:** Hope, Arkansas  
**EDUCATION:** Ouachita Baptist University  
B.A. 1976  
**PARTY:** Republican  
**FAMILY:** Three children  
**RELIGION:** Baptist  
**ELECTED:** to a full term in November  
1998, re-elected November 2002  
**TERM EXPIRES:** January 2007





**GOVERNOR JEB BUSH**  
**FIRST LADY COLUMBA BUSH**

**BIRTHDATE:** February 11, 1953  
**BIRTHPLACE:** Midland, Texas  
**EDUCATION:** University of Texas B.A. 1973  
**PARTY:** Republican  
**FAMILY:** Three children  
**RELIGION:** Catholic  
**ELECTED:** November 1998,  
November 2002  
**TERM EXPIRES:** January 2007



## FLORIDA

- ◆ Prior to being elected Governor, helped to run one of the largest full service commercial real estate companies in South Florida.
- ◆ Served as Florida’s Secretary of Commerce from 1987 to 1988, during which time he promoted Florida’s business climate worldwide.
- ◆ In 1995, established the Foundation for Florida’s Future, a not-for-profit organization to impact public policy at the grassroots level. As chairman of the foundation, co-founded the Liberty City Charter School, an independent public school serving the most poverty-stricken areas of Miami.
- ◆ As Governor, developed and implemented the “A+ Plan for Education,” which raised standards, increased accountability and funding for Florida’s public schools and provided Opportunity Scholarships for children in chronically failing schools.
- ◆ Increased public school funding during the past seven years by \$6.1 billion, or 54 percent.
- ◆ Since 1999, provided \$14 billion in tax relief to Floridians.
- ◆ Under the Governor’s leadership, Florida has led the nation in job growth for the past three years.
- ◆ Invested more than \$1 billion to clean up and restore America’s Everglades, and has committed an additional \$2.5 billion through the end of the decade to continue the progress.
- ◆ Forged a 50:50 state/federal partnership to implement the \$8 billion Comprehensive Everglades Restoration Plan.
- ◆ Championed historic legislation to establish the *Florida Forever* program, committing \$3 billion to acquire environmentally sensitive land vital to the preservation and conservation of Florida’s natural resources.
- ◆ Worked diligently to support and strengthen Florida families and protect the state’s most vulnerable residents. Since 1999, increased funding for child safety by 137 percent, signed laws to keep violent offenders behind bars and keep Florida’s streets safe.
- ◆ Proposes to transform Florida’s Medicaid program into an innovative market that will provide participants the right to choose health care plans, providers and services that best meet their needs.

# GEORGIA

- ◆ Received an honorable discharge at the rank of captain in the United States Air Force. A licensed pilot for more than 30 years.
- ◆ Participated in his community as a veterinarian and small business owner before stepping into his first public office as a member of the planning and zoning board.
- ◆ Spent 11 years in the state Senate, earning bipartisan respect and leading the assembly for four years as the Majority Leader, later elected President ProTempore.
- ◆ Elected the first Republican governor of Georgia since Reconstruction.
- ◆ Began his first day as governor by signing executive orders to set forth strict ethical guidelines for the executive branch, and to create the Office of Inspector General. Has also pushed additional ethical standards for elected officials.
- ◆ Introduced and signed into law legislation reforming the foster care system, an issue of personal interest to Governor and Mrs. Perdue. New child protection measures will protect children from abusive caregivers, make it a separate felony to manufacture methamphetamines in the presence of a child, and improve Georgia's version of the Amber Alert system.
- ◆ Successfully passed an education initiative, entitled GeorgiaLearns.com, which enables and empowers students, parents and teachers to meet higher standards of accountability and achievement, provides more discipline resources to educators, and gives teachers a pay raise.
- ◆ Established the Commission for a New Georgia to perform diagnostics of state government in order to improve efficiency and effectiveness and apply best practices from the private sector to the operations of state government.
- ◆ Developed a comprehensive \$15.5 billion transportation program, called Fast Forward, to relieve congestion and promote economic growth. It accelerates the state's construction projects from 18 years to six years.
- ◆ Chairman of the Southern Governors' Association 2004–05.
- ◆ Introduced and signed into law an education package that created the Georgia Virtual High School and increased local flexibility and tax credits for teachers through the Master Teacher legislation.
- ◆ Initiated the landmark Georgia Land Conservation Act that secures \$100 million to promote long-term conservation and the protection of the state's natural, cultural, and historical resources.
- ◆ Promoted the "Live Healthy Georgia" campaign that created an advisory committee to educate and promote healthier lifestyles.



**GOVERNOR SONNY PERDUE**  
**FIRST LADY MARY PERDUE**

**BIRTHDATE:** December 20, 1946  
**BIRTHPLACE:** Perry, Georgia  
**EDUCATION:** University of Georgia  
D.V.M. 1971  
**PARTY:** Republican  
**FAMILY:** Four children, three grandchildren  
**RELIGION:** Baptist  
**ELECTED:** November 2002  
**TERM EXPIRES:** January 2007





**GOVERNOR ERNIE FLETCHER**  
**FIRST LADY GLENNA FLETCHER**

**BIRTHDATE:** November 12, 1952  
**BIRTHPLACE:** Mt. Sterling, Kentucky  
**EDUCATION:** University of Kentucky  
 College of Engineering B.S. 1974;  
 University of Kentucky College of  
 Medicine M.D. 1984  
**PARTY:** Republican  
**FAMILY:** Two children, four  
 grandchildren  
**RELIGION:** Baptist  
**ELECTED:** November 2003  
**TERM EXPIRES:** December 2007



## KENTUCKY

- ◆ Served as a fighter pilot in the United States Air Force where he led flights that intercepted Soviet military aircraft during the Cold War.
- ◆ Before entering public office, was a family practice physician for 12 years.
- ◆ Legislative career began in 1995 when he was elected to serve as a state representative for Kentucky's 78th district, where he served on the Kentucky Commission on Poverty and the Task Force on Higher Education.
- ◆ Elected to the United States House of Representatives in 1998, where he served on the House Committee on Energy and Commerce, and was named chairman of the Subcommittee on Health.
- ◆ As Governor, reformed the state tax system in historic legislation, revising it to match 21st century standards that give relief to the poor, provide tuition tax credits for in-state institutions, promote economic development, and protect environmental resources.
- ◆ Launched a program to eliminate waste and increase efficiency in Kentucky state government, including the reduction of Cabinet level agencies, streamlining operations of Cabinets, investigating waste in the state procurement card program and transportation contract bidding programs. These efforts are among many which have saved millions of dollars for Kentucky taxpayers.
- ◆ Initiated the Kentucky Community Preparedness Program as a security measure designed to prevent acts of hostility and educate communities on how to respond to emergency conditions.
- ◆ Formed the Commonwealth Energy Policy Task Force to finalize Kentucky's first comprehensive energy strategy that will maintain low-cost energy while developing environmentally friendly energy resources.
- ◆ Launched Kentucky's first comprehensive drug control plan for enforcement, prevention, and treatment substance abuse.
- ◆ Initiated a Get Healthy Kentucky! campaign through the office of the First Lady to develop a plan for achieving and maintaining healthy lifestyles.
- ◆ Developed the Read to Achieve Initiative, supporting the First Lady's efforts on behalf of the children of Kentucky by establishing the Reading Diagnostic and Intervention program to help teachers improve the reading skills of primary students and intervene when students are struggling. The goal is to ensure that all students are reading at or above grade level by the third grade.
- ◆ Launched program to develop and utilize a state brand to boost Kentucky's image, make it consistent through all the ways we reach people, and help Kentucky stand out from the crowd. Kentucky-Unbridled Spirit was the brand chosen by the public, representing the can-do attitude of Kentuckians.
- ◆ Created the Kentucky Horse Racing Authority to identify and meet new challenges facing Kentucky's signature horse industry, as well being responsible for its promotion, thereby increasing national interest and tourism.
- ◆ Launched the "Prescription for Innovation: Delivering Broadband Technology for a 21st Century Kentucky", that will provide broadband (high-speed Internet) access to all Kentuckians by 2007. This comprehensive plan will leverage state, federal and private investment to blanket Kentucky with high-speed Internet access, resulting in improved citizen services and the promotion of economic development.
- ◆ Chairman of the Southern States Energy Board.

# LOUISIANA

- ◆ Before entering the public sector, was a schoolteacher at a public high school in Breaux Bridge, Louisiana.
- ◆ In 1984, she became the first woman ever to represent the people of Lafayette in the state Legislature.
- ◆ Elected to the Louisiana Public Service Commission where she became the first female commissioner, and later, the first woman to chair the commission.
- ◆ Elected Lieutenant Governor in 1995 and re-elected in 1999. During her two terms, she led the Department of Culture, Recreation and Tourism.
- ◆ Under her leadership, tourism in Louisiana increased by 41%, which has led to a significant increase in the economic contribution of tourism, and also to the creation of 21,000 new tourism-related jobs.
- ◆ As Governor, enacted legislation that will reduce taxes on business by \$1 billion over seven years.
- ◆ Committed to providing affordable, accessible healthcare; improving the state's education system; and creating a strong and vibrant economy.
- ◆ Implementing an ethics package to change the negative perception of Louisiana's political leaders by prohibiting secret contributions to candidates, as well as prohibiting acceptance of campaign contributions during a regular legislative session.
- ◆ Increased accountability standards for private Pre-K teachers in order to bring the private schools in line with the public school standards.
- ◆ Increased funding for Louisiana's successful early childhood education program, LA-4, to cover almost every at-risk child in the state.
- ◆ Developed short-term solutions and a comprehensive plan to improve the state's long-term care system for the elderly.
- ◆ In 2004, was elected as Chairman of the Southern Regional Educational Board.
- ◆ Incoming Chairman of the Southern Governors' Association.



**GOVERNOR KATHLEEN BABINEAUX BLANCO**  
**FIRST GENTLEMAN RAYMOND S. BLANCO**

**BIRTHDATE:** December 14, 1942

**BIRTHPLACE:** Coteau, Louisiana

**EDUCATION:** University of Louisiana at Lafayette B.S. 1964

**PARTY:** Democrat

**FAMILY:** Six children, seven grandchildren

**RELIGION:** Catholic

**ELECTED:** November 2003

**TERM EXPIRES:** January 2008





**GOVERNOR ROBERT L. EHRLICH, JR.**  
**FIRST LADY KENDEL EHRLICH**

**BIRTHDATE:** November 25, 1957  
**BIRTHPLACE:** Arbutus, Maryland  
**EDUCATION:** Princeton University BA  
1979, Wake Forest School of Law  
J.D. 1982  
**PARTY:** Republican  
**FAMILY:** Two children  
**RELIGION:** Methodist  
**ELECTED:** November 2002  
**TERM EXPIRES:** January 2007



## MARYLAND

- ◆ After working in a Baltimore-based law firm for over a decade, served for nine years in the Maryland General Assembly before being elected to four terms in the United States House of Representatives.
- ◆ While in the House, served on the Energy and Commerce Committee, and co-chaired the House Biotechnology Caucus.
- ◆ Authored legislation to reduce workplace regulation for small businesses and to assist the disabled to return to work; sponsored bills requiring minimum sentences for gun crimes and establishing tax credits for parents who adopt children; and voted to increase federal funding for schools in poor districts and for the Head Start Program.
- ◆ In his first year as governor, established the first-ever charter school initiative in Maryland, and has passed full funding for the bridge to Excellence Education Initiative, a program that provides increased funding for schools in low-income districts.
- ◆ Restructured the state government, establishing the first Governor’s Office on Homeland Security, and proposed \$850 million in spending reductions to bring the budget into balance.
- ◆ Proposed the Chesapeake Bay Water Restoration Fund, which will generate approximately \$66 million annually in revenues to finance wastewater treatment plant upgrades. The fund will contribute to the long-term health of the Chesapeake Bay, Maryland’s greatest economic and environmental treasure.
- ◆ Created the Governor’s Commission on Quality Education to analyze principal and teacher accountability, good school policy practices, school readiness, and other critical areas of interest. Also initiated a statewide campaign to ensure that all children have the option to receive early learning opportunities.
- ◆ Established the Maryland State Drug and Alcohol Abuse Council to coordinate statewide measures of prevention and treatment.
- ◆ Helped create the Interstate Air Quality Council to meet federal standards and coordinate planning between Maryland, Virginia, and Washington, D.C.
- ◆ Launched a comprehensive statewide violence prevention initiative to produce a communications and educational campaign to improve violence awareness and prevention.
- ◆ Introduced a public safety initiative that improves information technology for increased homeland security.

# MISSISSIPPI

- ◆ Served as the director of the White House Office of Political Affairs for two years in the mid-80s under President Ronald Reagan.
- ◆ Served two terms as chairman of the Republican National Committee from 1993 to 1997. During his chairmanship, Republicans won GOP control of both houses of Congress for the first time in forty years and the number of Republican governors rose from 17 to 32.
- ◆ Founded and formerly served as Chair and CEO of Barbour Griffith and Rogers, which Fortune magazine ranked as the nation's top lobbying firm.
- ◆ As Governor, led the fight against lawsuit abuse in Mississippi and helped pass the Tort Reform Act of 2004. The Heritage Foundation called it "the most comprehensive tort reform legislation in the nation."
- ◆ Initiated the Workforce Development Act of 2004, the largest overhaul of workforce training efforts in state history, and doubled state funding for job training.
- ◆ Organized "Momentum Mississippi," the state's long-range economic development strategy group that is composed of state business and community leaders. Overseen numerous economic development projects while in office, including Textron, Faurecia, FedEx Ground, Braves Double A Franchise, Chevron, Ionatron, SteelCorr, HINO, and NASA Shared Services Center.
- ◆ Introduced the "Upgrade Education Reform" package that rewards teachers and schools based on their performance, reduces state bureaucracy and strengthens discipline in Mississippi public schools.
- ◆ Used his "Operation: Streamline" plan—the largest cost-saving plan in state history—to reduce Mississippi's \$709 million budget shortfall by 43% in only one year. He also successfully opposed tax increases on Mississippi citizens. State spending for FY2006 will actually decline by 2%.
- ◆ Re-focused Mississippi on the fight against drugs by pushing tougher crystal meth laws and reorganizing the Mississippi Bureau of Narcotics.
- ◆ Led the fight to save Mississippi's struggling Medicaid program, encouraging preventive care for recipients and implementing the strongest anti-fraud plan in the history of Mississippi Medicaid.
- ◆ Southern Governors' Association First Vice Chairman, 2005–06.



**GOVERNOR HALEY BARBOUR**  
**FIRST LADY MARSHA BARBOUR**

**BIRTHDATE:** October 22, 1947

**BIRTHPLACE:** Yazoo City, Mississippi

**EDUCATION:** University of Mississippi

J.D. 1973

**PARTY:** Republican

**FAMILY:** Two children

**RELIGION:** Presbyterian

**ELECTED:** November 2003

Term expires: January 2008



# MISSOURI



**GOVERNOR MATT BLUNT**  
**FIRST LADY MELANIE ANDERSON BLUNT**

**BIRTHDATE:** November 20, 1970  
**BIRTHPLACE:** Springfield, Missouri  
**EDUCATION:** United States Naval Academy B.S. 1993  
**PARTY:** Republican  
**FAMILY:** One child  
**RELIGION:** Baptist  
**ELECTED:** November 2004  
**TERM EXPIRES:** January 2009



- ◆ Prior to his election as governor, served as an active duty naval officer, a member of Missouri's General Assembly and Missouri's 37th Secretary of State.
- ◆ As governor, promoted litigation reform to address the health care crisis, and initiated regulatory reform to lower costs for small business owners.
- ◆ Submitted a balanced budget that included increased funding for public schools without raising taxes on working families.
- ◆ Identified new ways to reduce unnecessary state services and spending.
- ◆ Created a State Government Review Commission to make recommendations for reform and to assess the efficiency of state executive departments.
- ◆ Reformed the First Steps program to ensure state aid reaches children with developmental disabilities.
- ◆ Established the Governor's Advisory Council for Plant Biotechnology to increase and improve production within Missouri.
- ◆ Initiated a legislative package of economic development reforms to create and attract family-supporting jobs using economic incentives.
- ◆ Established the Missouri School Bus Safety Task Force to improve the safety of educational transportation.

## NORTH CAROLINA

- ◆ First elected to public office in 1982 when he became the district attorney for the 13th Judicial District.
- ◆ As district attorney, battled drug trafficking and public corruption, achieved one of the highest drug conviction rates in the state and was named one of the country's top drug busters by USA Today.
- ◆ Elected North Carolina's Attorney General in 1992 and re-elected in 1996.
- ◆ As attorney general, able to push new laws through the General Assembly that created "weapon-free" school zones. Created a Citizens' Rights Division to protect the state's vulnerable citizens; worked to ensure "truth in sentencing," attacked telemarketing fraud and predatory lending; and worked to prevent youth access to tobacco products.
- ◆ Under his leadership as governor, North Carolina's business climate has been ranked #1 by Site Selection magazine.
- ◆ Focused on improving education and bringing the state's budget into balance. Cut state spending while still increasing investments in education.
- ◆ Reduced the state's operating budget for the first time in over 30 years.
- ◆ Reduced class size in grades K-3 and implemented "More at Four," an educational pre-K program for at-risk 4-year-olds to ensure their readiness to learn.
- ◆ Worked to protect the environment by brokering the Clean Smokestacks bill to substantially cut the state's coal-fired power plant emissions of multiple air pollutants that cause smog, haze and other problems.
- ◆ Promoted the "Live and Earn" five-year high school program that will provide job training and advance degree opportunities for all North Carolina students.
- ◆ Helped create the nation's first Center for 21st Century Skills that will work with public educational institutions to reform the education system.



**GOVERNOR MICHAEL F. EASLEY**  
**FIRST LADY MARY EASLEY**

**BIRTHDATE:** March 23, 1950

**BIRTHPLACE:** Nash County, North Carolina

**EDUCATION:** University of North Carolina B.A. 1972, North Carolina Central University J.D. 1976

**PARTY:** Democrat

**FAMILY:** One child

**RELIGION:** Catholic

**ELECTED:** November 2000, re-elected November 2004

**TERM EXPIRES:** January 2009





**GOVERNOR BRAD HENRY**  
**FIRST LADY KIMBERLY HENRY**

**BIRTHDATE:** June 10, 1963  
**BIRTHPLACE:** Shawnee, Oklahoma  
**EDUCATION:** University of Oklahoma  
B.A. 1985, University of Oklahoma  
College of Law J.D. 1988  
**PARTY:** Democrat  
**FAMILY:** Three children  
**RELIGION:** Baptist  
**ELECTED:** November 2002  
**TERM EXPIRES:** January 2007



## OKLAHOMA

- ◆ Established Henry, Canavan & Hopkins, PLLC, a highly rated law firm, and served as past president of the Pottawatomie County Bar Association.
- ◆ Served as member of numerous boards of directors, including a directorship of the Shawnee Chamber of Commerce, Project Safe, Inc., and St. Gregory’s College, and was named Young Oklahoman of the Year in 1997.
- ◆ Served in the Oklahoma state Senate for ten years, beginning at age 29, authoring numerous pieces of legislation and serving as chairman of the Senate Judiciary Committee and Vice-Chair of the Senate Economic Development Committee.
- ◆ Implemented an early childhood education initiative, mandated early funding of education and enacted tough but reasonable restrictions on smoking in public places.
- ◆ Passed a ballot initiative which was approved by voters to reform the “Rainy Day Fund” to preserve dollars for true emergencies.
- ◆ Successfully advanced a ballot initiative to establish the Oklahoma Education Lottery, which was overwhelmingly approved by voters.
- ◆ Passed a majority of 2004 agenda including tort reform, targeted tax cuts for economic development, a comprehensive health care program and a gaming regulation ballot initiative designed to boost funding for schools and save jobs in the Oklahoma horse industry.
- ◆ Established the state’s anti-methamphetamine laws that reduced the number of meth labs by as much as 80 percent and served as a model for other states.
- ◆ Succeeded with an equally ambitious 2005 agenda, including teacher pay raises, a school accountability program, a \$500 million bond issue to improve college campuses, and financial aid and tax relief for military families and vets. Also eased access to affordable prescription drugs by creating a centralized source of information.
- ◆ Implemented tax relief such as reducing the income tax rate and returning excess revenue through rebates.
- ◆ Passed comprehensive workers comp reform to save businesses more than \$100 million annually and protect the workers’ rights.
- ◆ Guaranteed \$170 million in new revenues annually to improve roads and bridges.

# PUERTO RICO

- ◆ Completed a yearlong clerkship at the Puerto Rico Supreme Court.
- ◆ Served as a law clerk for the Honorable Levin Campbell, Chief Judge of the Federal Court of Appeals, First Circuit Court in Boston, Massachusetts.
- ◆ In 1989, became the legislative affairs advisor to Governor Rafael Hernández Colón.
- ◆ Ran for elected office in 1992 and was elected as a state representative-at-large for the Popular Democratic Party in the Puerto Rico House of Representatives.
- ◆ Reelected in 1996, and in 1997 became the House minority leader.
- ◆ In 1997, elected president of the Popular Democratic Party in Puerto Rico, becoming the second-youngest official to hold that position.
- ◆ Elected as resident commissioner of the Commonwealth of Puerto Rico in 2000, and served in the U.S. House of Representatives.
- ◆ Member of three Congressional committees including Agriculture, Resources, and Small Business.
- ◆ Served as a member of the Congressional Hispanic Caucus where he was chair of the Livable Communities Task Force.
- ◆ Strongly defended the Commonwealth as the status for the U.S. / Puerto Rico relationship.
- ◆ Participated in many state and federal forums and has spoken at universities such as Harvard, Georgetown, and George Washington on the issue of Puerto Rico's status, economic development and education.
- ◆ Wrote *En Honor a la Verdad*, a collection of speeches about Puerto Rico's democracy and self-determination.



**GOVERNOR ANÍBAL ACEVEDO-VILÁ**  
**FIRST LADY LUISA GÁNDARA ACEVEDO-VILÁ**

**BIRTHDATE:** February 14, 1962

**BIRTHPLACE:** San Juan, Puerto Rico

**EDUCATION:** University of Puerto Rico

B.A 1982, J.D. 1985, Harvard

University, Masters of Law, 1987

**PARTY:** Democrat

**FAMILY:** Two children.

**RELIGION:** Catholic

**ELECTED:** November 2004

**TERM EXPIRES:** January 2009



## SOUTH CAROLINA



**GOVERNOR MARK SANFORD**

**FIRST LADY JENNY SANFORD**

**BIRTHDATE:** May 28, 1960

**BIRTHPLACE:** Fort Lauderdale, Florida

**EDUCATION:** Furman University B.A. 1983,  
University of Virginia M.B.A 1988

**PARTY:** Republican

**FAMILY:** Four children

**RELIGION:** Episcopal

**ELECTED:** November 2002

**TERM EXPIRES:** January 2007



- ◆ After graduating with an MBA, worked in real estate finance and investment in New York and Charleston.
- ◆ Was elected to the United States House of Representatives in 1994 and honored his promise to limit his tenure to three terms.
- ◆ While in the House, was recognized by the Citizens Against Government Waste as No. 1 in Congress, by the National Taxpayers Union as one of the top three in Congress, and inducted into the Taxpayers Hall of Fame by Taxpayers for Common Sense for cutting government waste, limiting government growth and spending, and preventing increases in taxes.
- ◆ As Governor, succeeded in passing a campaign finance reform bill, enacting major reforms to the Department of Motor Vehicles, and consolidating several state agencies. These reforms, along with his newly-created Governor's Commission on Management, Accountability and Performance, come as part of his efforts to increase accountability in state government, increase business-like efficiency and make state agencies more customer-friendly.
- ◆ Proposed a universal tax credit for education, along with other reforms on charter schools, including opening the education marketplace by giving parents more choices and improving the public schools.
- ◆ Produced the first true Executive Branch budget in South Carolina history in 2004, a comprehensive spending plan that resulted in \$125 million direct taxpayer savings.
- ◆ Guided the "Fiscal Discipline Act of 2004" through the General Assembly, helping pay off South Carolina's unconstitutional \$155 million deficit and placing caps on spending growth for years to come.
- ◆ Received the 2005 Grace Commission Legacy Reward from the Citizens Against Government Waste for making government more accountable by protecting taxpayers.
- ◆ Implemented a Health Savings Account option for state employees, which allows consumer choices to drive down the costs and obtain better coverage options.
- ◆ Initiated "Contract for Change," a five-point legislative agenda designed to create new jobs, make the government more accountable and efficient, and improve the education system through the use of tort reform, tax relief, and government, healthcare, and education restructuring.
- ◆ Under Gov. Sanford's leadership, the SC General Assembly passed a comprehensive tort reform package and cut taxes for small businesses, significant steps toward materially improving South Carolina's business climate.
- ◆ Created the South Carolina Education Reform Council to conduct a top-to-bottom review of the state's educational system and perform necessary improvements.
- ◆ Initiated the "Healthy South Carolina Challenge" and added the "Healthy Community Challenge," and the "Healthy County Challenge" that puts the counties' and communities' health care systems in friendly competition in order to promote effective health improvements.
- ◆ Former Chairman of Economic Development and Commerce Committee of National Governors Association.

# TENNESSEE

- ◆ Drafted a business plan that led to the creation of HealthAmerica Corporation, which grew to more than 6,000 people and was traded on the New York Stock Exchange. Sold the company in 1986.
- ◆ Served as mayor of Nashville between 1991 and 1999, bringing the NFL's Tennessee Titans to the city, building a new library system, successfully reducing crime, and infusing almost \$500 million into local education. The funding employed new teachers, enhanced the core curriculum programs, and helped build and improve local schools.
- ◆ Prompted record economic growth by recruiting well-established corporations to the Nashville area and providing new jobs during his term as mayor.
- ◆ Among his first acts as governor, signed three executive orders creating the toughest ethics rules in the history of Tennessee's executive branch, and ended years of secrecy by opening doors to state budget hearings, allowing the public to see for the first time where their money is spent.
- ◆ Since taking office, passed three responsible, balanced budgets, putting Tennessee on the right track towards fiscal responsibility, increasing funding for public education and putting a focus on the economy with a customized, regional approach to job creation, helping create a net gain of jobs at a time when many states suffered losses.
- ◆ Leading the effort, with the support of the Tennessee General Assembly, to reform and preserve TennCare, the state's managed health care program for 1.3 million poor, disabled or uninsured residents.
- ◆ Established the Governor's Office of Children's Care to coordinate services through state departments and the private sector.
- ◆ Proposed the "Volunteer eHealth Initiative" to improve the delivery of healthcare and provide a framework for better care and disease management statewide.
- ◆ Created the Governor's Interagency Council on Homelessness to coordinate and focus the state's efforts in combating the problem.
- ◆ Launched a web site to inform parents, teachers, childcare providers, and community leaders about state programs and progress of the Tennessee Pre-K system to which he granted over \$25 million in excess lottery funds.
- ◆ Signed the "Meth-Free Tennessee Act of 2005" improving laws fighting methamphetamines, making the substance harder to access and abuse, as well as providing law enforcement vital tools they need to fight the war against the drug.



**GOVERNOR PHIL BREDESON**  
**FIRST LADY ANDREA CONTE**

**BIRTHDATE:** November 21, 1943  
**BIRTHPLACE:** Oceanport, New Jersey  
**EDUCATION:** Harvard University B.S. 1967  
**PARTY:** Democrat  
**FAMILY:** One child  
**RELIGION:** Presbyterian  
**ELECTED:** November 2002  
**TERM EXPIRES:** January 2007



## TEXAS



**GOVERNOR RICK PERRY**  
**FIRST LADY ANITA PERRY**

**BIRTHDATE:** March 4, 1950  
**BIRTHPLACE:** Paint Creek, Texas  
**EDUCATION:** Texas A&M University  
B.S. 1972  
**PARTY:** Republican  
**FAMILY:** Two children  
**RELIGION:** Methodist  
**ELECTED:** November 2002  
**TERM EXPIRES:** December 2006



- ◆ Served in the United States Air Force flying C-130 tactical airlift aircraft in the U.S., Europe, and the Middle East from 1972-1977.
- ◆ Prior to being elected Lieutenant Governor, served two terms as Texas Commissioner of Agriculture, and served in the Texas House of Representatives representing a rural West Texas district from 1985 to 1991.
- ◆ As governor, led the fight in 2003 to bridge a \$10 billion budget gap without raising taxes. Despite tough times, the budget contained \$1 billion increases for education and healthcare while widely reducing agency spending.
- ◆ Has worked toward improving education standards, strengthening curriculum and increasing public school funding by \$7 billion. Has also made higher education more accessible by passing the \$300 million TEXAS scholarship program, and by increasing higher education funding by \$3 billion.
- ◆ Signed into law some of the most sweeping lawsuit reforms in the nation to help end a medical liability crisis. Today, insurers are returning to the Texas market and Texas patients in communities once under legal siege have access to more medical specialists.
- ◆ Signed into law major workers' compensation reform that will lower workers' compensation costs, control medical costs, expand access to care, and improve benefits to injured workers.
- ◆ Signed into law asbestos lawsuit reforms that protect legitimate claims while preventing frivolous lawsuits from bankrupting innocent employers.
- ◆ Proposed creation of, and signed into law, the Texas Emerging Technology Fund, to grant up to \$200 million to improve research at universities and help start-up technology firms. This new fund is in addition to the highly successful Texas Enterprise Fund, which has provided funds to attract thousands of jobs to Texas, and \$6 billion in new capital investment. Texas is now ranked the best business climate by *Site Selection Magazine*.
- ◆ Reformed Child and Adult Protective Services by increasing salaries and decreasing caseloads for CPS workers, allowing for more efficient time spent with children and families.
- ◆ Has worked toward a fairer criminal justice system in Texas with the passage of two bills: one that provides for post conviction DNA testing and a second one that provides a \$19.8 million budget to create a statewide program for the establishment of an indigent defense task force. Also secured an additional \$1.7 million for expanded training to criminal defense attorneys who represent indigent defendants.
- ◆ Expanded the Early Start Initiative to the entire state, granting more children access to scientifically-based pre-K programs that dramatically improve skills needed to develop efficiency in reading and writing.
- ◆ Improved laws aimed at reducing methamphetamine use and production in Texas, both restricting access to the drug and creating new programs protecting children exposed to the drug.

## U.S. VIRGIN ISLANDS

- ◆ Has worked as an elementary school teacher, assistant principal, high school principal and professor of history at the University of the Virgin Islands.
- ◆ Before becoming governor, first served the public as assistant commissioner of the Department of Education.
- ◆ As commissioner, built several new schools in order to eliminate double sessions.
- ◆ Has served on all four constitutional conventions of the U.S. Virgin Islands.
- ◆ As governor, completed a reorganization plan for the government in order to make it more efficient.
- ◆ Past chairman of the Virgin Islands Board of Education, trustee of the University of the Virgin Islands, and past member of the Roy Lester Schneider Hospital.
- ◆ Goals include the development of the U.S. Virgin Islands tempered by the protection of its limited resources and fragile environment.
- ◆ Advocates a government based on sound economic management rooted in fiscal responsibility.
- ◆ Committed to strengthening the Economic Development Commission tax-incentive program, which gives tax breaks to new businesses, and plans to allocate \$45 million for capital projects in St. Croix where the economy is lagging.
- ◆ Chairman of the Public Finance Authority.
- ◆ Winner of 2001 Trumpet Award, given by Turner Broadcast System.
- ◆ Member of the Society of Virgin Islands Historians.



### GOVERNOR CHARLES W. TURNBULL

**BIRTHDATE:** February 5, 1935

**BIRTHPLACE:** St. Thomas,  
U.S. Virgin Islands

**EDUCATION:** Hampton University B.A.  
1958, Masters 1959; University of  
Minnesota Doctorate 1976

**PARTY:** Democrat

**FAMILY:** Single

**RELIGION:** Methodist

**ELECTED:** November 1998, Re-elected  
November 2002

**TERM EXPIRES:** January 2007



## VIRGINIA



**GOVERNOR MARK R. WARNER**

**FIRST LADY LISA COLLIS**

**BIRTHDATE:** December 15, 1954

**BIRTHPLACE:** Indianapolis, Indiana

**EDUCATION:** George Washington University B.A. 1977, Harvard University Law School J.D. 1980

**PARTY:** Democrat

**FAMILY:** Three children

**RELIGION:** Presbyterian

**ELECTED:** November 2001

**TERM EXPIRES:** January 2006



- ◆ Proposed and led a bi-partisan legislative consensus on a major tax reform and budget reform effort in 2004, allowing the Commonwealth to make historic investments in public education, higher education, law enforcement and health care, while preserving the state's reputation for fiscal integrity. The plan included some modest increases, and lowered income taxes for every Virginian, cut the sales tax on groceries and closed corporate loopholes.
- ◆ Named one of *Governing Magazine's* "Public Officials of the Year" in 2004.
- ◆ In 2005, Virginia earned the distinction of being the "best-managed state in the nation" after a two-year independent study by the Pew Charitable Trust and *Governing* magazine cited Governor Warner's leadership in long-range planning and other fiscally conservative, business-like reforms.
- ◆ Worked with the General Assembly in 2005 to pass significant funding for Chesapeake Bay restoration, as well as the largest ever one-time infusion of cash for transportation projects.
- ◆ Won legislative support in 2003 for a series of state government reforms in technology, procurement, and in real estate and fleet management. The reform package promises to save tens of millions of dollars while providing efficiency and accountability for the taxpayers.
- ◆ Launched the Healthy Virginians Initiative (and the Governor's Task Force on Information Technology in Health Care), the Education for a Lifetime initiative to improve education for pre-school through graduate school, Virginia Corps to promote volunteer service, Secure Virginia to improve safety and security, the Commission on Efficiency and Effectiveness to eliminate redundant or unnecessary government services, and the Economic Crisis Strike Force to help workers access services after a major plant closing or string of layoffs.
- ◆ Former Chairman of the Southern Governors' Association 2003–2004.
- ◆ Former Chairman of the National Governors Association 2004–2005. As chairman, launched a national discussion about Redesigning the American High School and reforming Medicaid.
- ◆ Former Chairman of the Education Commission of the States 2003–2004, and States' Co-Chairman of the Appalachian Regional Commission 2002–2005.
- ◆ Founding partner of Columbia Capital Corporation, a technology venture capital fund in Alexandria, Virginia.
- ◆ Helped create more than 70 telecommunications and information technology companies, many of which later went public.
- ◆ Founding chair of the Virginia Health Care Foundation, which has provided health care to more than 400,000 Virginians.
- ◆ Started program to link Virginia's historically black colleges and universities to internships and job opportunities in more than 75 technology companies and created four regional-based small business investment funds to help local entrepreneurs start businesses in their communities.

## WEST VIRGINIA

- ◆ Took over his family-owned retail carpet business and later owned Enersystems, a privately held natural resources company.
- ◆ Elected to the West Virginia House of Delegates in 1982 and West Virginia state Senate in 1986 where he remained in office until 1996.
- ◆ Served as West Virginia's Secretary of State from 2001–2005.
- ◆ From 2000 to 2004, served as president of the Marion County Rescue Squad.
- ◆ As governor, promoted civil justice and insurance reform legislation that reduced insurance rates statewide.
- ◆ Recommended reforms for the judicial pension system.
- ◆ Initiated an agency-by-agency evaluation process in order to improve management of resources.
- ◆ Advocated increased development of coal and steel production to reduce national dependency on foreign energy.
- ◆ Reduced workers' compensation premiums in order to save businesses millions of dollars.
- ◆ Helped establish the Department of Commerce to stimulate economic development.
- ◆ Strengthened ethics legislation that holds public officials more accountable.
- ◆ Helped launch a statewide 2-1-1 service to provide West Virginians with important health and human services information in their communities.



**GOVERNOR JOE MANCHIN III**  
**FIRST LADY GAYLE CONELLY MANCHIN**

**BIRTHDATE:** August 24, 1947  
**BIRTHPLACE:** Farmington, West Virginia  
**EDUCATION:** West Virginia University  
B.A. 1970  
**PARTY:** Democrat  
**FAMILY:** Three children,  
six grandchildren  
**ELECTED:** November 2004  
**TERM EXPIRES:** January 2009



# 2005 FINANCIAL STATEMENT

## BALANCE SHEET

Cash and Investments	\$1,338,324
Lease Deposit	6,850
Pre-paid Conference Expenses	5,732
<b>Total Assets</b>	<b>\$1,350,907</b>
Accounts Payable	\$2,668
Accrued Leave	2,015
Deferred Conference Revenue	505,010
<b>Total Liabilities</b>	<b>\$509,693</b>
Fund Balance—Beginning July 1, 2004	\$763,310
Excess of Revenues over Expenditures	(77,904)
Fund Balance—Ending June 30, 2005	\$841,214
<b>Total Liabilities and Fund Balance</b>	<b>\$1,350,907</b>

## REVENUE AND EXPENDITURES JULY 1, 2004 – JUNE 30, 2005

### REVENUE

SGA Dues	\$134,760
CSG Pass-through Dues	242,134
Interest	15,986
Conference Proceeds and Grant Funds	159,247
Reserve Fund Allocation	33,902
<b>Total Revenue</b>	<b>\$586,029</b>

### EXPENDITURES

Personnel	\$331,115
General Office	30,035
Equipment	5,250
Occupancy	77,986
Travel & Conference	22,233
Consultants	6,200
Indirect to CSG	9,989
Capital Improvements	4,800
Chairman's Initiative 2004	24,758
Chairman's Initiative 2005	3,825
Telehealth/Homeland Security	519
<b>Total Expenditures</b>	<b>\$516,710</b>

**Revenues over (under) Expenditures**      **\$69,319**

Prepared by SGA from unaudited financial statements provided by the Council of State Governments (CSG). An audit of CSG accounts will be conducted by Moore Stephens Potter & Company in September 2005.



# CONFERENCE SPONSORS

---

## HOSTS

Aflac  
AGL Resources  
Altria Corporate Services  
BellSouth  
The Coca-Cola Company  
Genral Electric  
Georgia Pacific  
Georgia Power  
Southern Company  
Sprint-Nextel  
Synovus Financial Corp.

## PLATINUM

Citrix  
Norfolk Southern Corporation

## GOLD

Amerihealth Mercy Health Plan  
Anheuser Busch Companies  
Apple Computer  
Aramark  
The Association of Georgia's Textile  
Manufacturers  
AT&T  
BP America  
Cendant Corp.  
Chevron  
Cingular Wireless  
ECorporate Solution  
Equifax  
FHC Health Systems  
Ford Motor Company  
Georgia Automobile Dealers Association  
Georgia Crown Distributing Co. Inc.  
The Home Depot  
Lockheed Martin  
Merrill Lynch  
JP Morgan Electronic Financial  
Services (EFS)  
NRA  
Novartis Pharmaceutical Corp.  
Progress Energy  
Russell Corporation  
Solvay Pharmeceuticals

## SILVER

ALLTEL  
American Beverage Association  
American Watercraft Association  
AstraZeneca Pharmaceuticals  
BankSouth  
Development Authority of Bulloch County  
Citigroup/Primerica  
Coca-Cola Enterprises

Colonial Pipeline Company  
Comcast  
Computer Associates  
Corrections Corporation of America  
The Cowles Clinic  
Cox Communications  
CSX Transportation  
Cumming-Forsyth County  
Chamber of Commerce  
CVS/pharmacy  
Delta Air Lines  
Diageo  
Dominion  
Emory University/Emory Healthcare  
Entergy  
Food Lion  
General Motors Corporation  
Georgia Association of Realtors  
Georgia Chamber of Commerce  
Georgia Electric Membership Corporation  
GlaxoSmithKline  
GTECH  
Internet Security Systems, Inc.  
Intuit  
Koch Cellulose, LLC  
Eli Lilly & Co.  
Linger Longer Development Company  
Macon-Bibb County CVB/Capital  
City Bank  
MCI  
Microsoft  
PBS&J  
Perdue Farms  
Pfizer, Inc.  
PhRMA  
Piedmont Water Resources  
Plantation Cablevision  
R.J. Reynolds Tobacco Company  
Schering Plough  
Scientific Games  
Sea Island Company  
The Shaw Group  
Southeastrans, Inc.  
SouthStar Energy Services, Inc.  
State Farm Insurance  
Symantec  
Joe Tanner & Associates  
Tenet Healthcare  
Tyson Foods Inc.  
UST Public Affairs  
Vintage Land  
Vulcan Materials  
Wachovia  
Wal-Mart Stores, Inc.

Waste Management  
WellStar Health Systems  
Virgil Williams

## BRONZE

Advance America  
AEP SWEPCO  
Aetna  
Alcoa  
American Electric Power  
ATMOS Energy  
Bayer Healthcare Corporation  
BB&T  
Bristol-Myers Squibb Company  
Cable Television Association of Georgia  
CGI-AMS  
CNA Financial Corporation  
The Columns Group  
John Deere  
Eastman Chemical  
EDS  
EEI (Edison Electric Institute)  
Empire Financial Services, Inc.  
The Farmers Bank  
Georgia Bankers Association  
Georgia Hospital Association  
Gold Kist Inc.  
Greene County Development Authority  
Hershend Family Entertainment  
Johnson & Johnson  
Kimberly-Clark Corp.  
Lake Oconee Community Bank  
LexisNexis  
Liberty Mutual Group  
Logisticare  
Maholo Advertising, Inc.  
Marathon Ashland Petroleum LLC  
MCCBC  
McDonald's Corp.  
Meadwestvaco Incorporated  
Motorola  
Novo Nordisk  
Oral Surgery Associates  
Sankyo Pharma  
John D. Stephens, Inc.  
SunTrust Bank  
T-Mobile USA  
TEXGA Management  
Troutman Sanders  
UCB Pharma, Inc.  
United Community Banks  
Weyerhaeuser Company  
Williams

## ADDITIONAL CONTRIBUTORS

Georgia Petroleum Council

SOUTHERN  
GOVERNORS' ASSOCIATION

Hall of the States | 444 North Capitol Street, NW, Suite 200 | Washington, DC 20001  
202-624-5897  
[www.southerngovernors.org](http://www.southerngovernors.org) | [sga@sso.org](mailto:sga@sso.org)

